

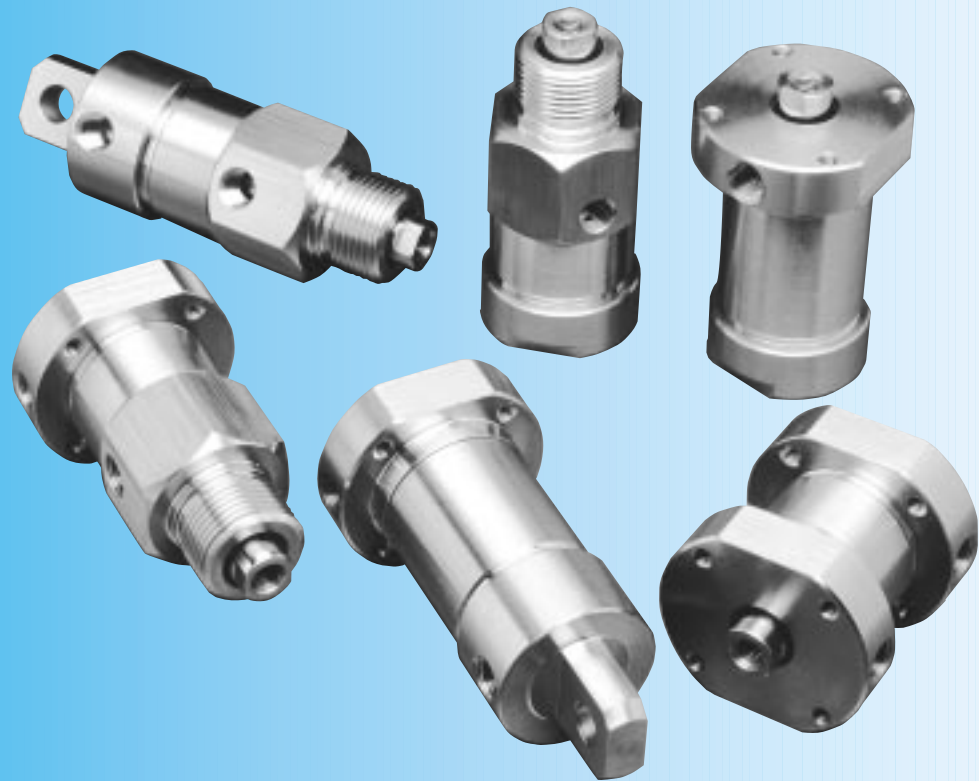
SMS Solid Stainless Cylinders

Space Saving and Conventional Lengths

Pneumatic to 200 PSI

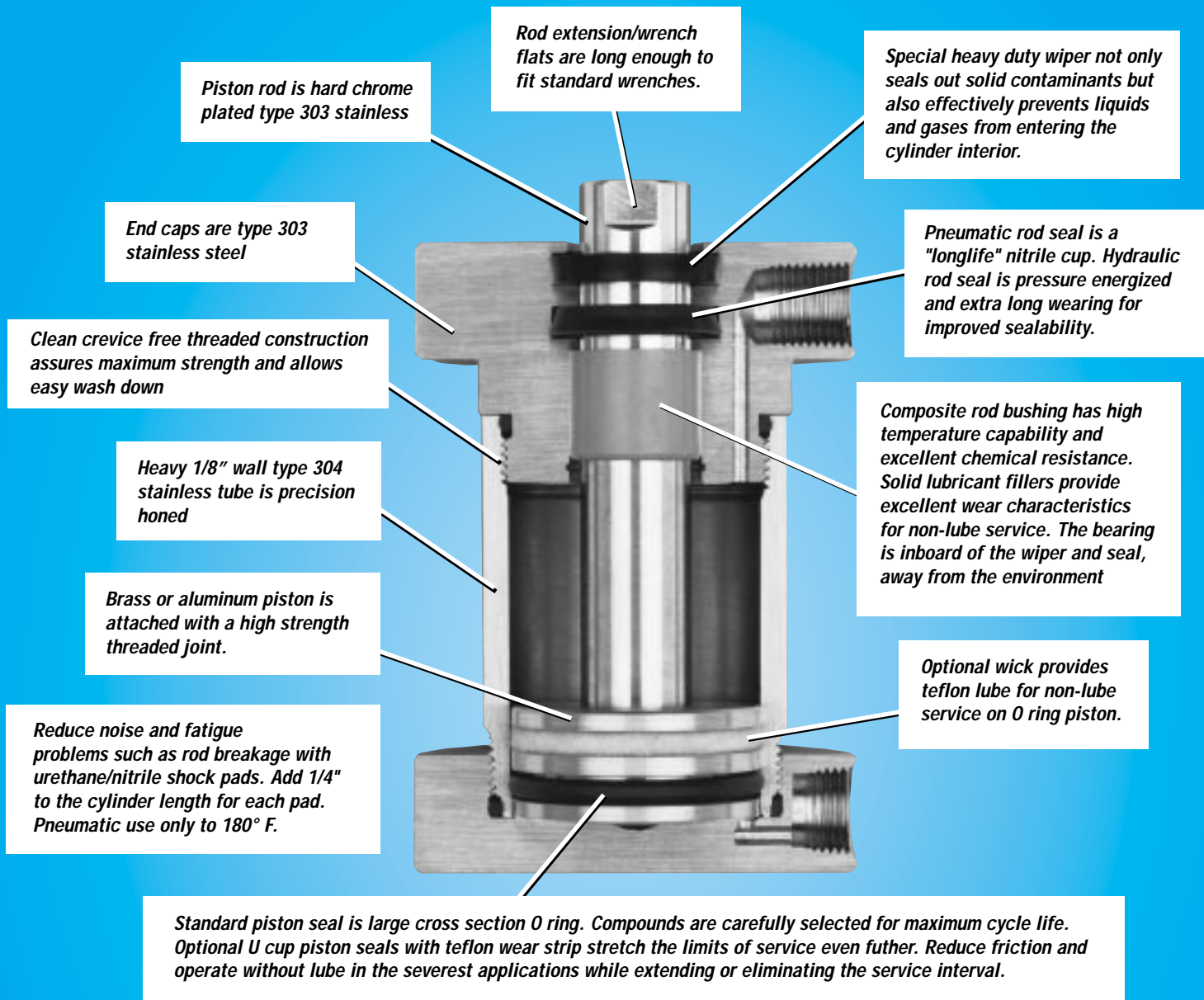
Hydraulic 400 to 500 PSI Non shock

1 1/8", 1 1/2", 2", 3" Bore



*300 Series Stainless Exterior Assures Aesthetics and Function
in Washdown Applications or other Harsh Environments*

SMS DESIGN FEATURES



If space permits for applications involving side loads or long strokes, select SMS 1, 2, 3, 5, 7, 8, 9, which have extra long bearings with added space between support points.

Strokes longer than the maximum listed in the ordering procedure can be produced but careful consideration must be given to how the cylinder is applied — how well is the load supported or guided, is the cylinder used in push or tension, is the cylinder vertical or horizontal, etc. Consult factory on all strokes longer than standard. Stroke increments other than standard can also be made. Special lengths are generally available in a few days and are priced as "non-standard" strokes.

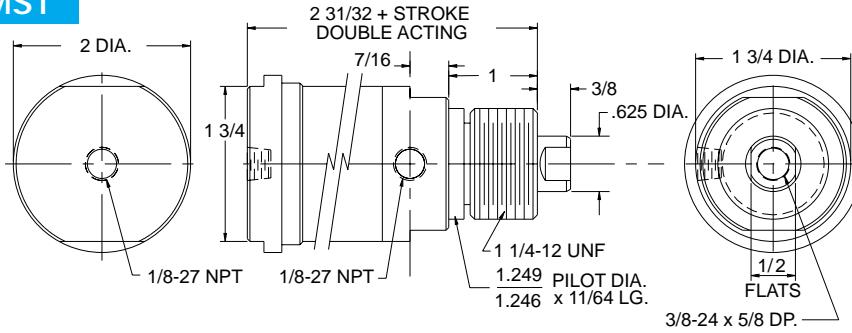


TM

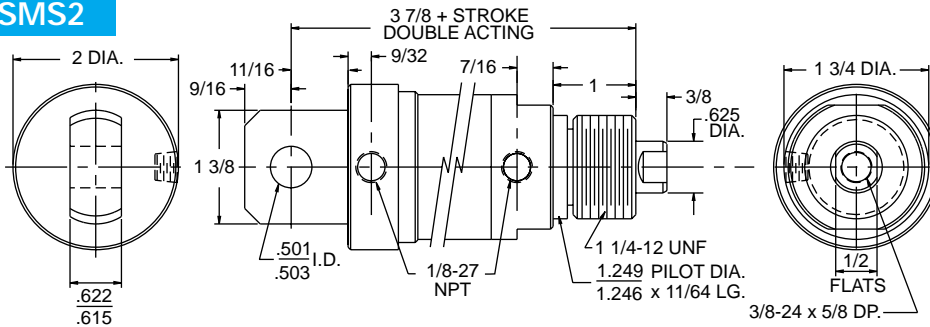
1 1/2" BORE SMS STAINLESS

200 PSI MAX. AIR
500 PSI MAX. HYD. Non shock

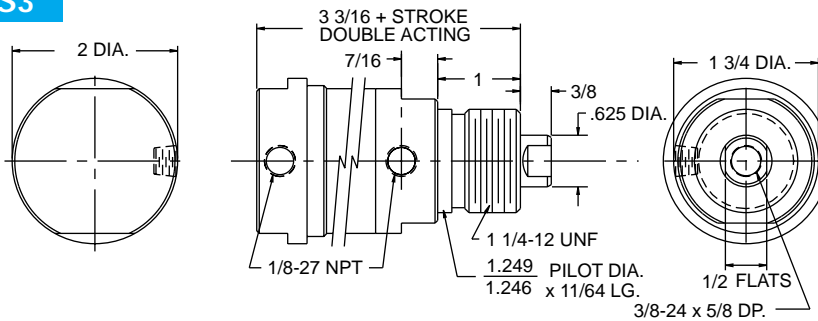
SMS1



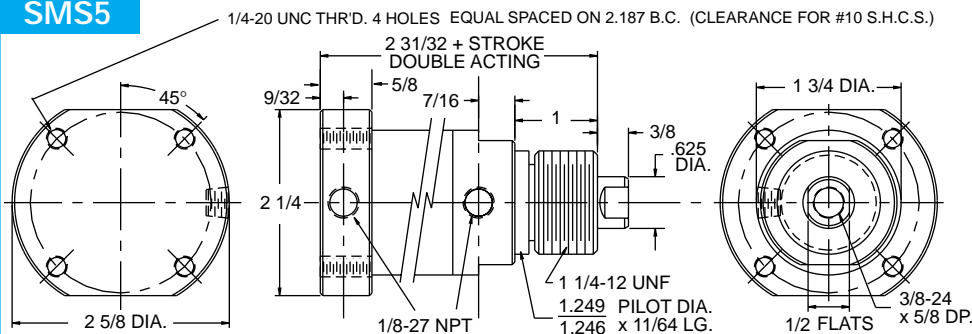
SMS2



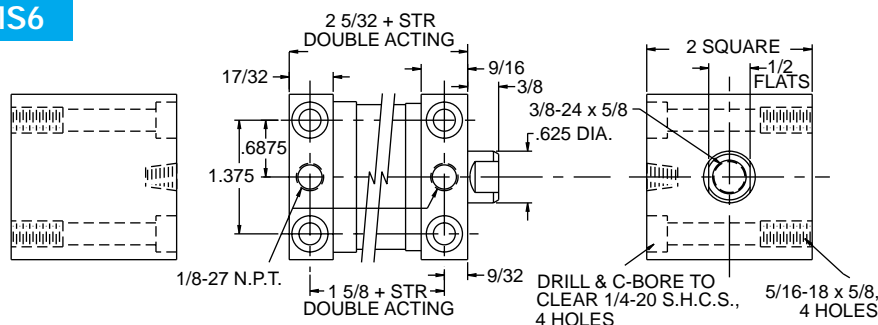
SMS3



SMS5



SMS6

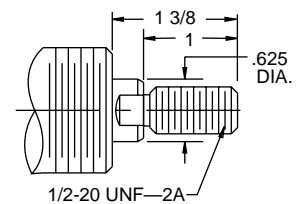


Spring Return Cylinders

Pneumatic only
Springs add to cyl. length
0-2" stroke add 1 1/2" extra
2 1/2-4" stroke add 3" extra
over 4" stroke not available

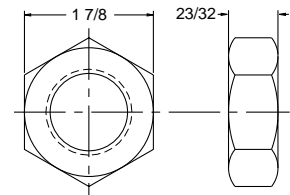
Spring force
Fully extended—15#
Fully compressed—50#
Spring material—Stainless steel

Optional Male Rod Thread

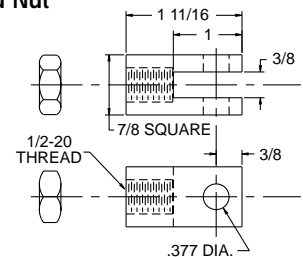


1 1/4 -12SS Nut Nose Mounting Nut

Not included with cylinder
Order Separately



SS-500 Rod Clevis and Nut



303 Stainless

SS-501 Clevis Pin Assembly

Used on SS-500 303 Stainless

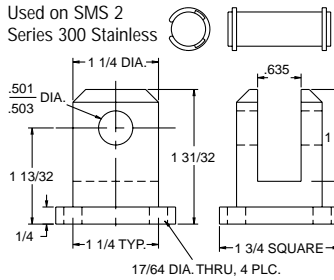


SMS Options

- Shock Pads
- Viton Seals
- Non-lube Service
- Magnetic Piston
- U Cup Piston
- Non-rotate (SMA 7,8,9)
- 90° Rear Clevis

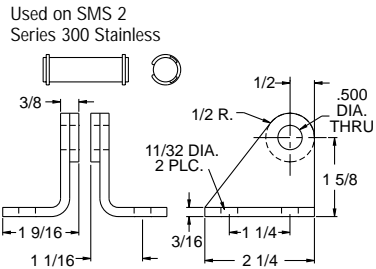
SSC-90

Low Profile Clevis Brk't



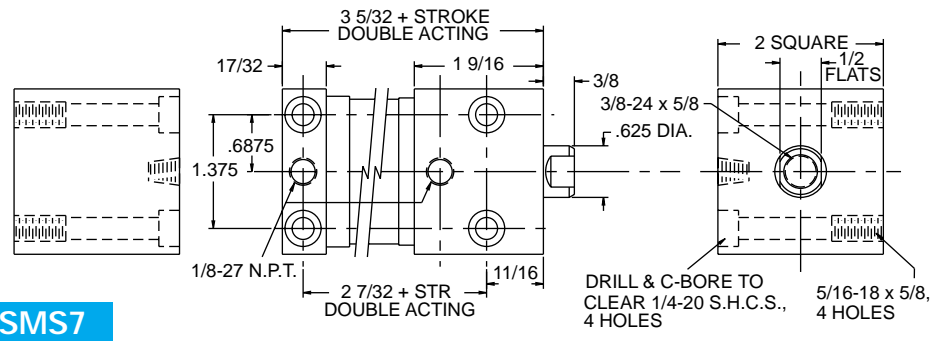
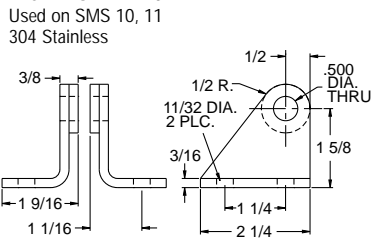
SS-100

St'd Clevis Brk't

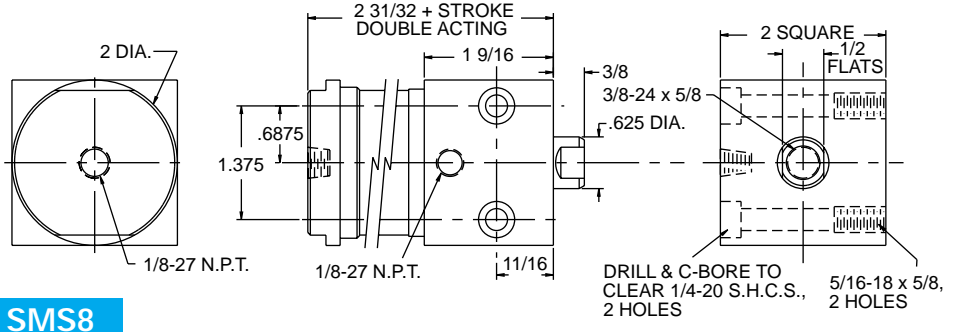


SS-100T

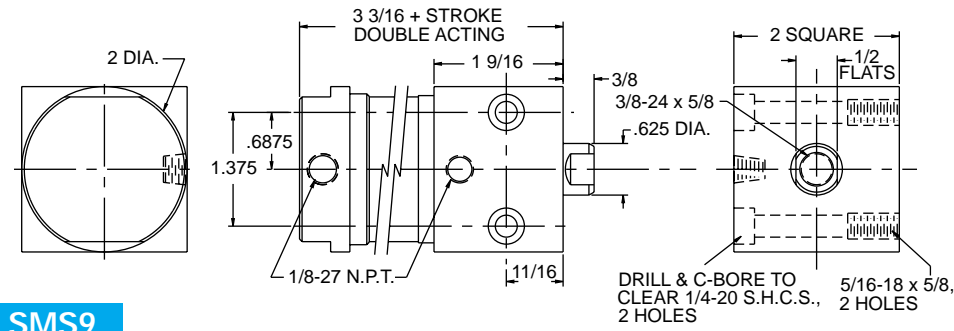
Trunnion Brk't



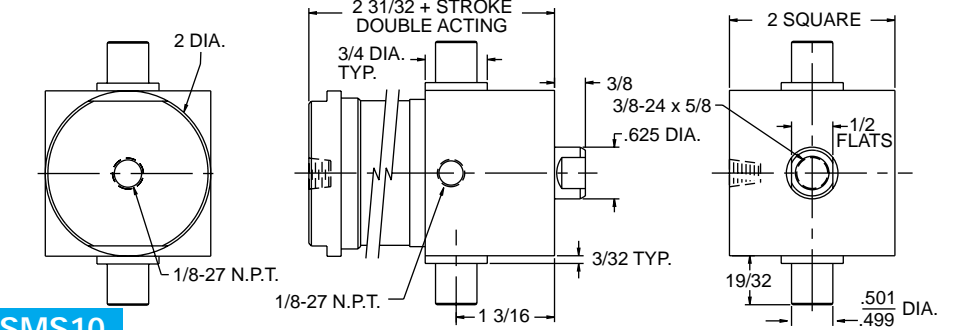
SMS7



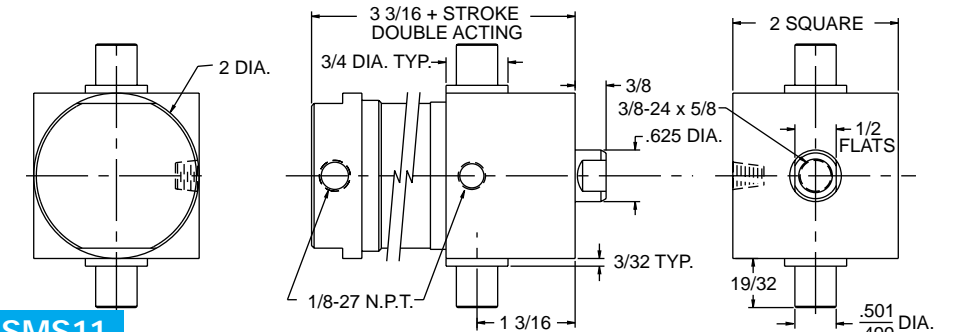
SMS8



SMS9



SMS10



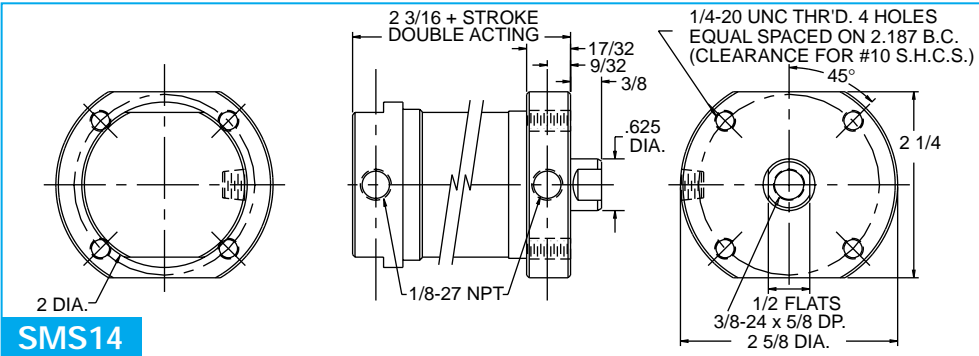
SMS11

Series SMS Solid Stainless

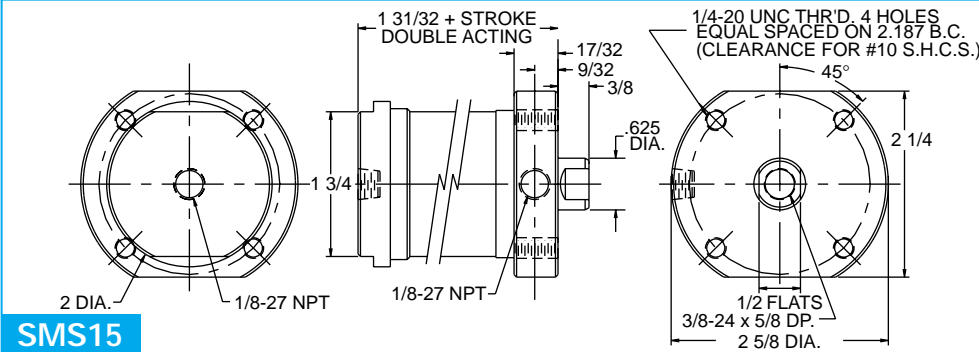
*All Aurora Cylinders
are 100% Factory
Tested to insure
Trouble Free
Performance*

1 1/2" BORE SMS STAINLESS

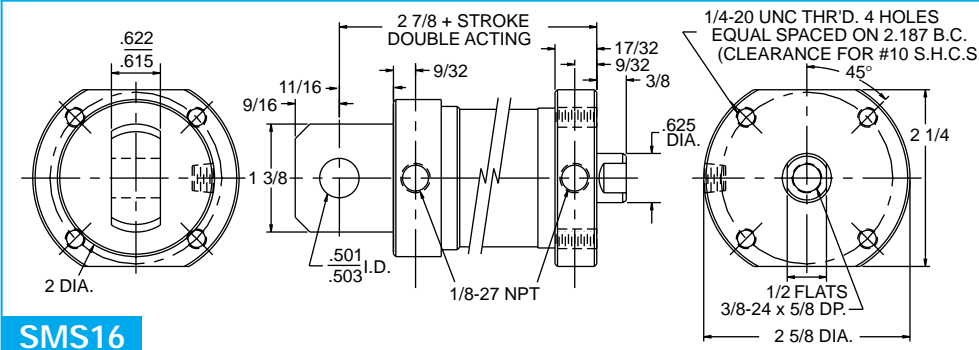
200 PSI MAX. AIR
500 PSI MAX. HYD. *Non shock*



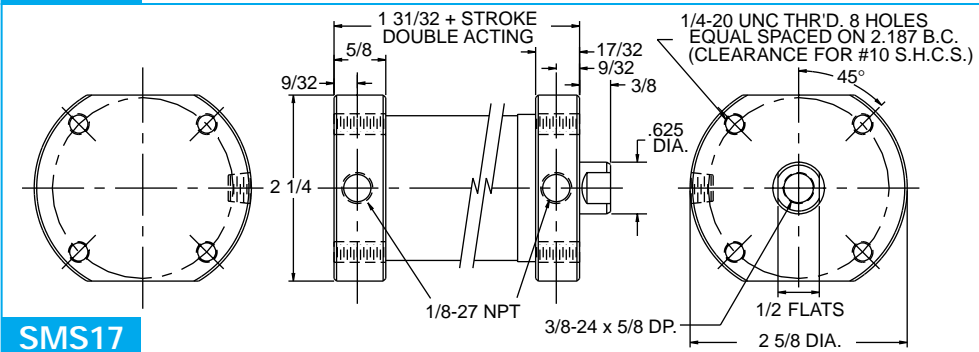
SMS14



SMS15



SMS16

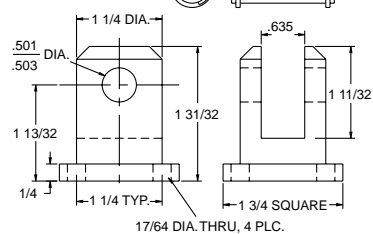


SMS17

SSC-90

Low Profile Clevis Brk't

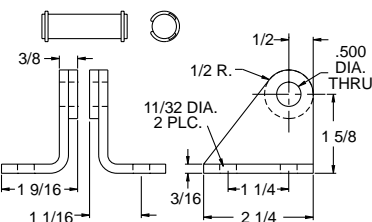
Used on SMS 16
Series 300 Stainless



SS-100

St'd Clevis Brk't

Used on SMS 16
Series 300 Stainless

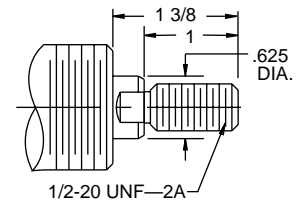


Spring Return Cylinders

Pneumatic only
Springs add to cyl. length
0-2" stroke add 1 1/2" extra
2 1/2-4" stroke add 3" extra
over 4" stroke not available

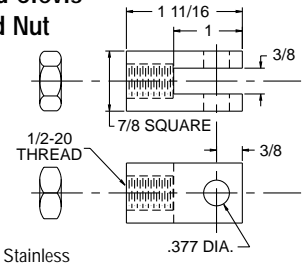
Spring force
Fully extended—15#
Fully compressed—50#
Spring material—Stainless steel

**Optional Male
Rod Thread**



SS-500

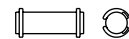
**Rod Clevis
and Nut**



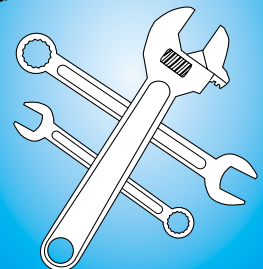
SS-501

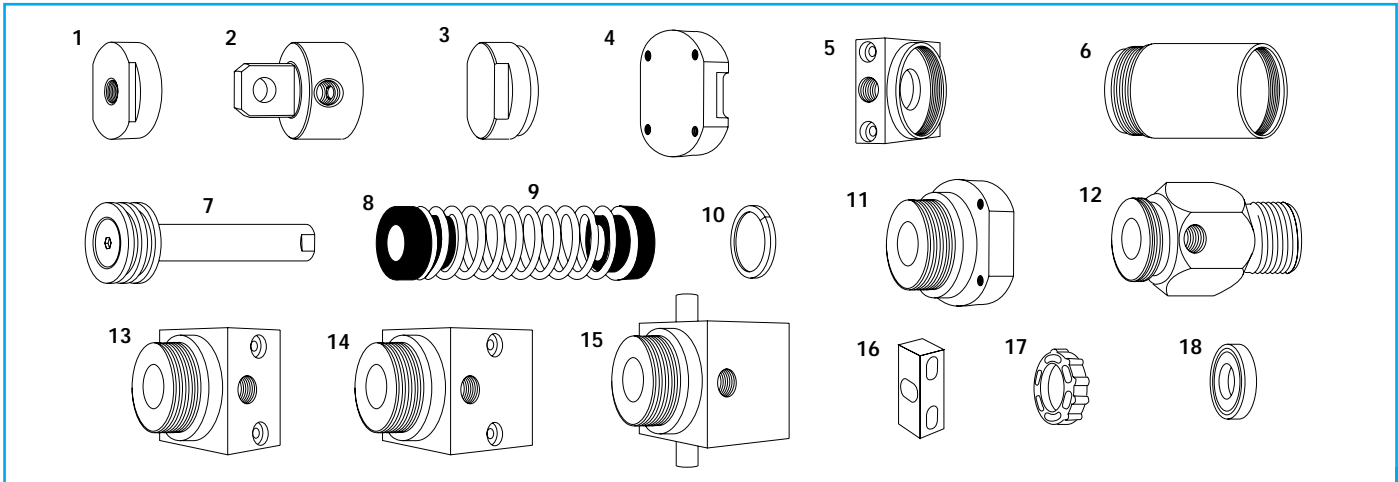
Clevis Pin Assembly

Used on SS-500 303 Stainless



**All Aurora Cylinders
are Fully Repairable**





Key	Description	1 1/8 Bore	1 1/2 Bore	2 Bore	3 Bore
Seal kits for cylinders with O ring piston					
	Pneumatic, Nitrile Add suffix NL for Non-Lube	SMS 3411	SMS 3415	SMS 3420	SMS 3430
	Pneumatic, Viton Add suffix NL for Non-Lube	SMS 3411V	SMS 3415V	SMS 3420V	SMS 3430V
	Hydraulic, Nitrile	SMS 3511	SMS 3515	SMS 3520	SMS 3530
	Hydraulic, Viton	SMS 3511V	SMS 3515V	SMS 3520V	SMS 3530V
Seal kits for cylinders with U cup piston – includes Teflon wear strip					
	Pneumatic, Nitrile	SMS 5411	SMS 5415	SMS 5420	SMS 5430
	Pneumatic, Viton	SMS 5411V	SMS 5415V	SMS 5420V	SMS 5430V
	Hydraulic, Nitrile	SMS 5511	SMS 5515	SMS 5520	SMS 5530
	Hydraulic, Viton	SMS 5511V	SMS 5515V	SMS 5520V	SMS 5530V
1	Rear port cap Add suffix 250 for 2" bore 1/4 NPT	SMS 1011	SMS 1015	SMS 1020	SMS 1030
2	Rear pivot cap Add suffix 250 for 2" bore 1/4 NPT	SMS 1111	SMS 1115	SMS 1120	SMS 1130
2	90° Rear pivot cap Add suffix 250 for 2" bore 1/4 NPT	SMS 111190	SMS 111590	SMS 112090	SMS 113090
3	Side port cap Add suffix 250 for 2" bore 1/4 NPT	SMS 4811	SMS 4815	SMS 4820	SMS 4830
4	Rear flange cap	SMS 1311	SMS 1315	SMS 1320	SMS 1330
5	Square cap Add suffix 250 for 2" bore 1/4 NPT	SMS 4611	SMS 4615	SMS 4620	
6	Tube	part No. is T followed by the complete cylinder part number			
7	Piston rod assembly	part No. is PR followed by the complete cylinder part number			
8	Spring guide Pair	SMS 1211	SMS 1215	SMS 1220	SMS 1230
9	Spring	SS 2111	SS 2115	SS 2120	SS 2120
10	Magnet SMS5911 and SS3215 supplied in pairs	SMS 5911	SS 3215	SS 3220	SS 3230
11	Flange head Add suffix NR for non-rotate	SMS 1411	SMS 1415	SMS 1420	SMS 1430
12	Nose Mount Head Add suffix 250 for 2" bore, 1/4 NPT	SMS 0111	SMS 0115	SMS 0120	SMS 0130
13	Short square Head Add suffix 250 for 2" bore, 1/4 NPT	SMS 4411	SMS 4415	SMS 4420	
14	Long square Head Add suffix 250 for 2" bore, 1/4 NPT	SMS 4511	SMS 4515	SMS 4520	
14	Square non rotate head	SMS 4511NR	SMS 4515NR	SMS 4520NR	
15	Trunnion head	SMS 4511T	SMS 4515T	SMS 4520T	
16	Non-rotate guide bushing Pair	SMS 5111	SMS 5111	SMS 5111	
17	Cap end shock pad	Consult factory			3MSP
18	Head end shock pad	11CSP	15CSP	2CSP	3MSP